

6

5

4

3

2

1

REVISION					
ZONE	REV	DESCRIPTION	DATE	CHANGED BY	APPROVED
	C	ECO-14665	06/16/2025	DMAY	

F

E

D

C

B

A

F

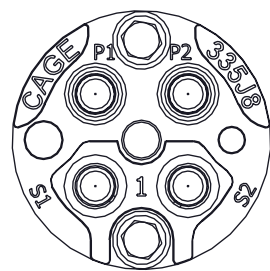
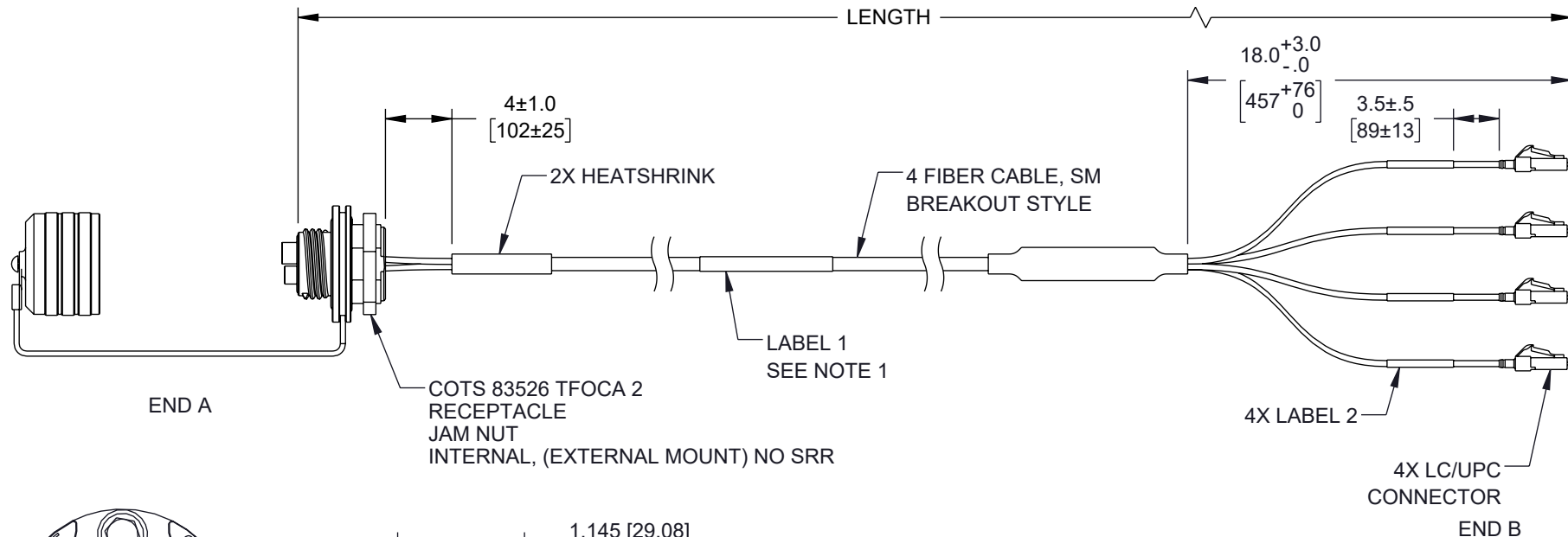
E

D

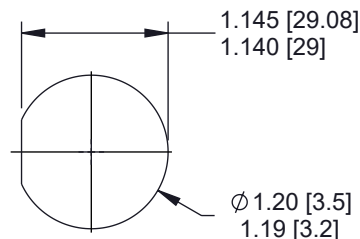
C

B

A



INSERT CAP
FACE VIEW



RECOMMENDED
MOUNTING HOLE

LABEL 1
SEE NOTE 1

LABEL 1
FCA-M8-JNLCSMMT-XX
MRF: 335J8
SN: XXXXXXXXXXXXXXXXXXXX

LABEL 2
XX-LC

SEE TABLE 1

TABLE 1: PINOUT DIAGRAM

END A	FIBER	END B
S1	BLUE	S1-LC
S2	GREEN	S2-LC
P1	ORANGE	P1-LC
P2	BROWN	P2-LC

TABLE 2: CABLE LENGTH

PART NO.	FEET	METERS
FCA-M8-JNLCSMMT-1	3.3	1
FCA-M8-JNLCSMMT-3	9.8	3

- NOTES:
- IDENTIFICATION LABEL PLACEMENT IS APPROX CENTERED.
 - CABLE ASSEMBLY DELIVERED HAND COILED.
 - FABRICATED, INSPECTED AND TESTED IN ACCORDANCE WITH IPC-A-640 CLASS 3.

- CABLE LENGTH TOLERANCE:
- LESS THAN (OR EQUAL TO) 20FT: +6"
 - GREATER THAN 20FT - 100FT: +12"
 - GREATER THAN 100FT: +36"

THE INFORMATION CONTAINED IN THIS DRAWING IS THE SOLE PROPERTY OF INFINITE ELECTRONICS, INC. ANY REPRODUCTION IN PART OR WHOLE WITHOUT THE WRITTEN PERMISSION OF INFINITE ELECTRONICS, INC. IS PROHIBITED. THESE COMMODITIES, TECHNOLOGY OR SOFTWARE WERE EXPORTED FROM THE UNITED STATES IN ACCORDANCE WITH THE EXPORT ADMINISTRATION REGULATIONS. DIVERSION CONTRARY TO U.S. LAW PROHIBITED.

UNLESS OTHERWISE SPECIFIED LEADING DIMENSIONS ARE INCHES DIMENSIONS IN [] ARE MILLIMETERS


TOLERANCES:

X = ±.2 [5]	FRACTIONS
.XX = ±.02 [0.5]	± 1/32
.XXX = ±.005 [0.13]	ANGLES ± 1°

CABLE LENGTH TOLERANCES:

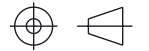
≤12 [305]	= +1 [25] / -0
>12 [305] ≤ 60 [1524]	= +2 [51] / -0
>60 [1524] ≤ 120 [3048]	= +4 [102] / -0
>120 [3048] ≤ 300 [7620]	= +6 [152] / -0
>300 [7620]	= +5% / -0

ALL DIMENSIONS ARE FOR REFERENCE ONLY AND SUBJECT TO CHANGE WITHOUT NOTICE. UN-DIMENSIONED NON-CRITICAL FEATURES MAY VARY IN SIZE AND LOCATION. COLORS MAY VARY.



an INFINIT® brand

Website: www.L-com.com
Phone: 1.800.341.5266 | 1.978.682.6936



INTERPRET ALL DIMENSIONS AND TOLERANCES PER ASME Y14.5

SCALE	SHEET
NONE	1 OF 2

DESCRIPTION

COTS M83526 (TFOCA II EQUIVALENT) 83526/17 4 CHANNEL JAM-NUT RECEPTACLE TO LC PC 4X SM 9/125/2mm, 1m

SIZE	CAGE CODE	DRAWN BY	ITEM NO.	REV
A	43321	SREITER	FCA-M8-JNLCSMMT-1	C

6

5

4

3

2

1

6

5

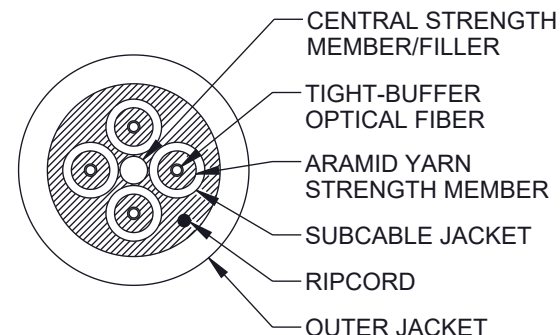
4

3

2

1

4 CHANNEL
BREAKOUT – MIL-TAC CABLES



FIBER PERFORMANCE

INDUSTRY STANDARD DESIGNATION	LOW WATER PEAK SINGLE-MODE ITU-T G.652.D
CORE/CLADDING DIAMETER (μm)	9/125
WAVELENGTH (nm)	1310/1550
SECONDARY BUFFER DIAMETER (μm)	900

MECHANICAL AND ENVIRONMENTAL

IMPACT RESISTANCE TIA-455-25	1500 IMPACTS
CRUSH RESISTANCE TIA-455-41	2200 N/cm
OPERATING TEMPERATURE	-55°C TO +85°C
STORAGE TEMPERATURE	-70°C TO +85°C

INSTALLATION AND OPERATING CHARACTERISTICS

	INSTALLATION	OPERATING
MAX TENSILE LOAD	2,200 N (490 lbs)	550 N (120 lbs)
MIN BEND RADIUS	7.5 cm (3.0 in)	3.8 cm (1.5 in)

CABLE CHARACTERISTICS

JACKET COLOR	BLACK
JACKET MATERIAL	POLYURETHANE
BUFFER MATERIAL	HARD ELASTOMERIC
SUBUNIT OD	2.0 mm
CABLE DIAMETER	7.5 mm (0.30 in)

L-com[®]
an INFINIT[®] brand

Website: www.L-com.com
Phone: 1.800.341.5266 | 1.978.682.6936



INTERPRET ALL DIMENSIONS AND
TOLERANCES PER ASME Y14.5

SCALE	SHEET
NONE	2 OF 2

DESCRIPTION

COTS M83526 (TFOCA II EQUIVALENT) 83526/17 4 CHANNEL
JAM-NUT RECEPTACLE TO LC PC 4X SM 9/125/2mm, 1m

THE INFORMATION CONTAINED IN THIS DRAWING IS THE SOLE PROPERTY OF INFINITE ELECTRONICS, INC. ANY REPRODUCTION IN PART OR WHOLE WITHOUT THE WRITTEN PERMISSION OF INFINITE ELECTRONICS, INC. IS PROHIBITED. THESE COMMODITIES, TECHNOLOGY OR SOFTWARE WERE EXPORTED FROM THE UNITED STATES IN ACCORDANCE WITH THE EXPORT ADMINISTRATION REGULATIONS. DIVERSION CONTRARY TO U.S. LAW PROHIBITED.

ALL DIMENSIONS ARE FOR REFERENCE ONLY
AND SUBJECT TO CHANGE WITHOUT NOTICE.
UN-DIMENSIONED/NON-CRITICAL FEATURES
MAY VARY IN SIZE AND LOCATION
COLORS MAY VARY

SIZE	CAGE CODE	DRAWN BY	ITEM NO.	REV
A	43321	SREITER	FCA-M8-JNLCSMMT-1	C

6

5

4

3

2

1