

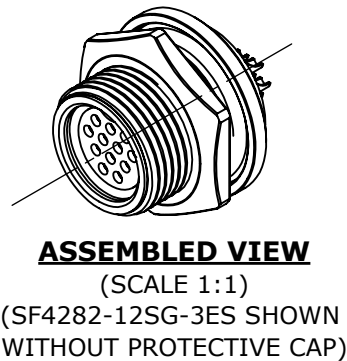
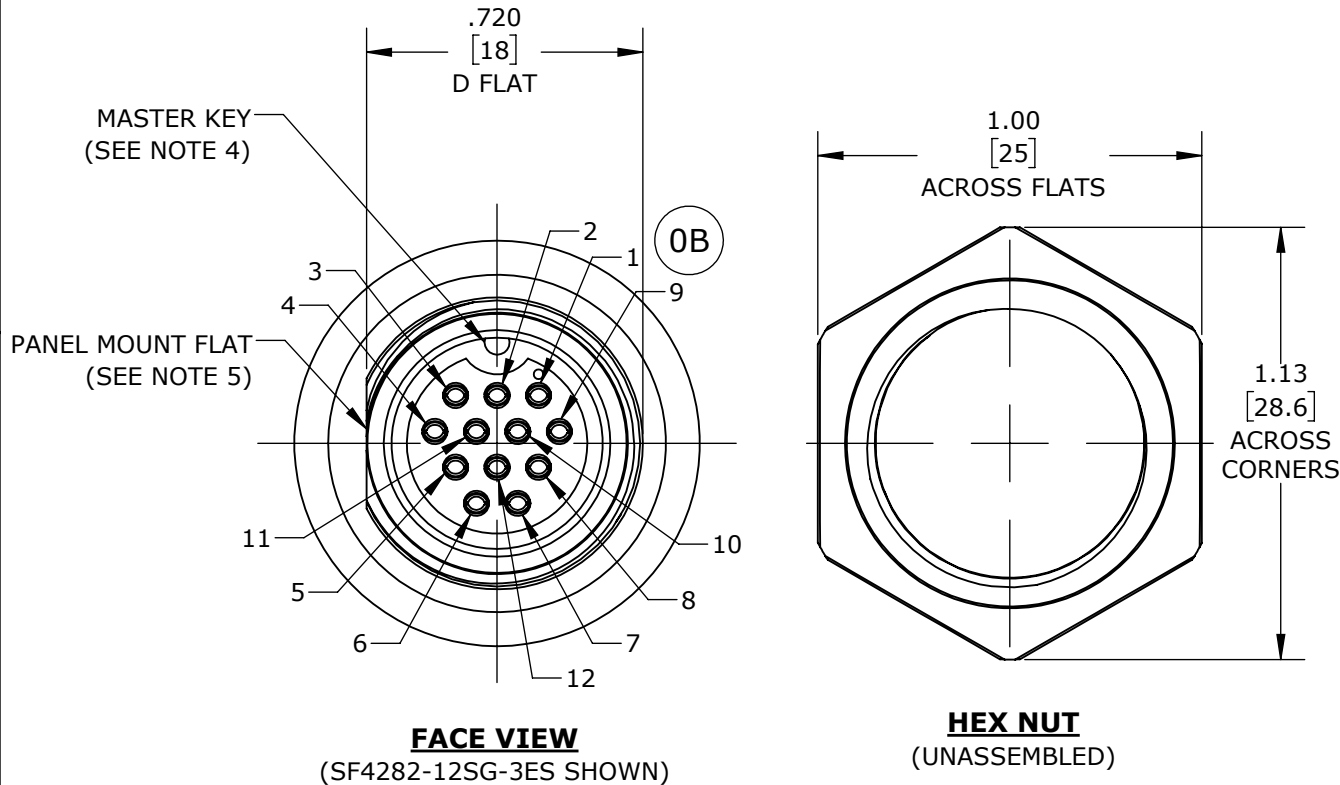
CUSTOMER PRINT

PART NUMBER: SF4282-XXSG-3ES

MFG. ENG.	APPROVED BY:	DATE:	QA	APPROVED BY:	DATE:

NOTES:

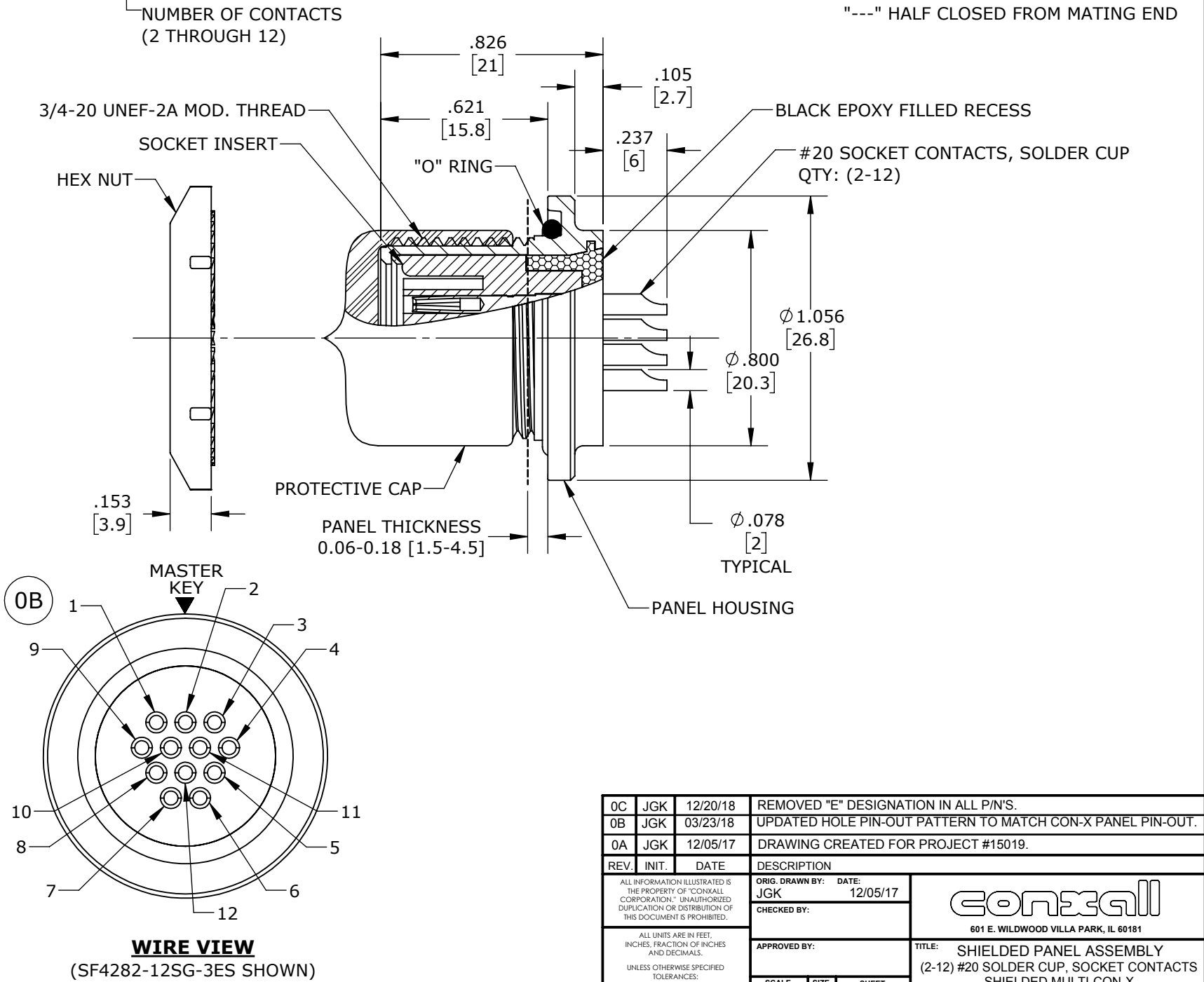
1. FINISHED CONNECTOR ASSEMBLIES ARE PACKED INTO A PARTITION BOX, 25 PIECES PER BOX. BOX IS LABELED WITH CONXALL PART NUMBER AND DATE CODE.
2. HEX NUT IS BULK PACKED IN POLY BAG. O-RING AND PROTECTIVE CAP ARE ASSEMBLED ONTO THE CONNECTOR.
3. TERMINATING END OF CONNECTOR IS FILLED WITH BLACK EPOXY.
4. MASTER KEY IS AT 12 O'CLOCK.
5. PANEL MOUNT FLAT IS AT 9 O'CLOCK.
6. SOLDER CUPS TO FACE MASTER KEY OF INSERT.
7. MATERIALS:
HEX NUT & PANEL HOUSING- COPPER ALLOY, NICKEL PLATED PER MIL-C-26074
PROTECTIVE CAP- ELASTOMER, BLACK
SOCKET INSERT- THERMOPLASTIC, BLACK
O-RING- ELASTOMER, BLACK
CONTACTS- COPPER ALLOY, GOLD PLATED PER MIL-G-45204 OVER NICKEL PER QQ-N-290



RECOMMENDED PANEL CUT-OUT

DIMENSIONS IN BRACKETS [] ARE METRIC, mm.

POSITIONS												
PART NUMBER	POS 1	POS 2	POS 3	POS 4	POS 5	POS 6	POS 7	POS 8	POS 9	POS 10	POS 11	POS 12
SF4282-2SG-3ES	---	---	---	OPEN	---	---	---	---	OPEN	---	---	---
SF4282-3SG-3ES	OPEN	---	OPEN	---	---	---	---	---	---	---	---	OPEN
SF4282-4SG-3ES	OPEN	---	OPEN	---	OPEN	---	---	OPEN	---	---	---	---
SF4282-5SG-3ES	---	OPEN	---	OPEN	---	OPEN	OPEN	---	OPEN	---	---	---
SF4282-6SG-3ES	OPEN	OPEN	---	OPEN	OPEN	---	OPEN	OPEN	---	---	---	---
SF4282-7SG-3ES	OPEN	OPEN	OPEN	OPEN	---	OPEN	OPEN	---	OPEN	---	---	---
SF4282-8SG-3ES	OPEN	---	OPEN	OPEN	OPEN	OPEN	OPEN	OPEN	OPEN	---	---	---
SF4282-9SG-3ES	OPEN	OPEN	OPEN	OPEN	OPEN	OPEN	OPEN	OPEN	OPEN	---	---	---
SF4282-10SG-3ES	OPEN	OPEN	OPEN	OPEN	OPEN	OPEN	OPEN	OPEN	OPEN	OPEN	---	---
SF4282-11SG-3ES	OPEN	OPEN	OPEN	OPEN	OPEN	OPEN	OPEN	OPEN	OPEN	OPEN	OPEN	---
SF4282-12SG-3ES	OPEN	OPEN	OPEN	OPEN	OPEN	OPEN	OPEN	OPEN	OPEN	OPEN	OPEN	OPEN
SF4282-XXSG-3ES												



RoHS COMPLIANT

0C	JGK	12/20/18	REMOVED "E" DESIGNATION IN ALL P/N'S.	
0B	JGK	03/23/18	UPDATED HOLE PIN-OUT PATTERN TO MATCH CON-X PANEL PIN-OUT.	
0A	JGK	12/05/17	DRAWING CREATED FOR PROJECT #15019.	
REV.	INIT.	DATE	DESCRIPTION	
ALL INFORMATION ILLUSTRATED IS THE PROPERTY OF "CONXALL CORPORATION." UNAUTHORIZED DUPLICATION OR DISTRIBUTION OF THIS DOCUMENT IS PROHIBITED.			ORIG. DRAWN BY:	DATE:
			JGK	12/05/17
ALL UNITS ARE IN FEET, INCHES, FRACTION OF INCHES AND DECIMALS. UNLESS OTHERWISE SPECIFIED TOLERANCES: 3 PLACE DECIMALS ±.005 ANGLES ±1° FRACTIONS ±1/16 ± CRITICAL CHARACTERISTIC FLAG PER SPEC. XXXX			CHECKED BY:	
			APPROVED BY:	
FILE: SAME AS P/N			SCALE	SIZE
			2:1	B
DIRECTORY: SLW			SHEET	1 OF 1
			PART NUMBER:	SF4282-XXSG-3ES
TITLE: SHIELDED PANEL ASSEMBLY (2-12) #20 SOLDER CUP, SOCKET CONTACTS SHIELDED MULTI-CON-X STANDARD PRODUCT				REV 0C

Mouser Electronics

Authorized Distributor

Click to View Pricing, Inventory, Delivery & Lifecycle Information:

Switchcraft:

[SF4282-10SG-3ES](#) [SF4282-11SG-3ES](#) [SF4282-12SG-3ES](#) [SF4282-2SG-3ES](#) [SF4282-3SG-3ES](#) [SF4282-4SG-3ES](#) [SF4282-5SG-3ES](#) [SF4282-6SG-3ES](#) [SF4282-7SG-3ES](#) [SF4282-8SG-3ES](#) [SF4282-9SG-3ES](#)